

The Aston

Lordswood Road, Harborne, Birmingham, B17 9BJ

🏠 Semi Detached 🛏 5 Bedrooms 💷 Price £680,000

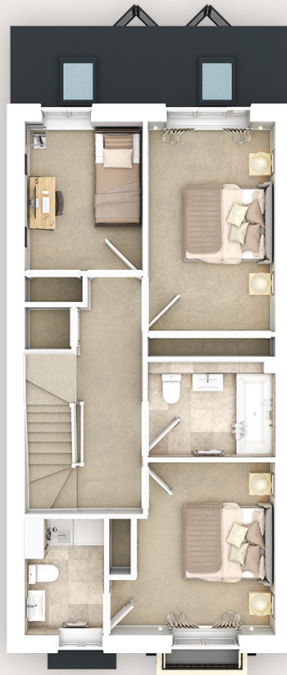


HARBORNE
P L A C E



Ground Floor

ROOM	SIZE
Lounge	4.69m x 4.13m / 16ft 3" x 13ft 6"
Kitchen/Dining	0.93 x 1.24m / 8ft 7" x 22ft 4"
Laundry	0.93 x 1.24m / 3ft x 4ft 1"
Larder	2.62m x 1.24m / 8ft 7" x 4ft 1"
Cloaks	0.93m x 1.75m / 3ft x 5ft 9"



First Floor

ROOM	SIZE
Bedroom 1	3.29m x 3.42m / 10ft 9" x 11ft 3"
Ensuite	1.58m x 2.30m / 5ft 2" x 7ft 7"
Bedroom 2	2.53m x 4.65m / 8ft 3" x 15ft 3"
Bedroom 3	2.34m x 3.56m / 7ft 8" x 11ft 8"
Bathroom	2.54m x 1.90m / 8ft 4" x 6ft 3"

Lorem ipsum dolor sit amet, consectetur adipiscing elit. Assumenda atque labore magnam quaerat quasi quis, sed. Autem consequatur, cumque dolore explicabo fugiat ipsam laboriosam laborum molestiae nobis pariatur porro quaerat rem sit. Ad amet assumenda at, consequatur eius facere illum libero magni natus, necessitatibus pariatur possimus quae saepe.

The Aston

Lordswood Road, Harborne, Birmingham, B17 9BJ

🏠 Semi Detached 🛏️ 5 Bedrooms 💰 Price £680,000



HARBORNE
P L A C E



Second Floor

ROOM	SIZE
Bedroom 4	4.96m x 3.98m / 16ft 3" x 13ft 1"
Bedroom 5	3.70m x 4.49m / 12ft 2" x 14ft 9"
Shower Room	2.36m x 1.49m / 7ft 9" x 4ft 11"

Lorem ipsum dolor sit amet, consectetur adipiscing elit. Assumenda atque labore magnam quaerat quasi quis, sed. Autem consequatur, cumque dolore explicabo fugiat ipsam laboriosam laborum molestiae nobis pariatur porro quaerat rem sit. Ad amet assumenda at, consequatur eius facere illum libero magni natus, necessitatibus pariatur possimus quae saepe.