

# The Warstone

PLOTS 1 & 2



3 BEDROOMS



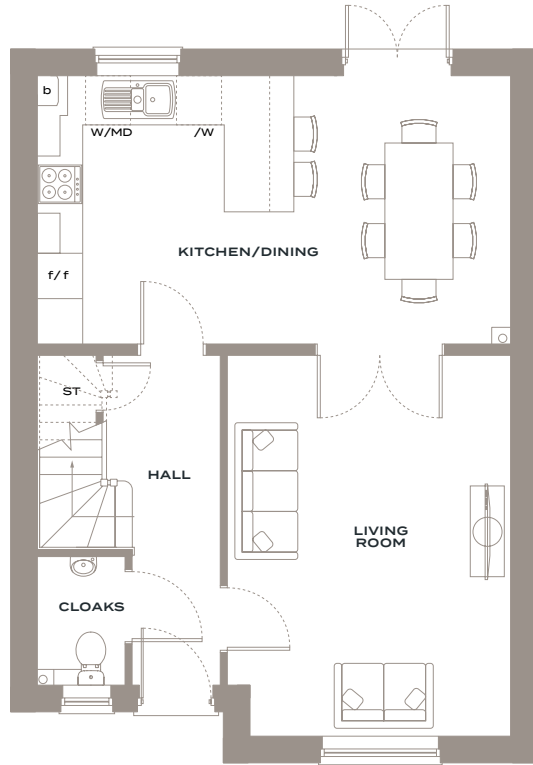
2 BATHROOMS



2 PARKING SPACES

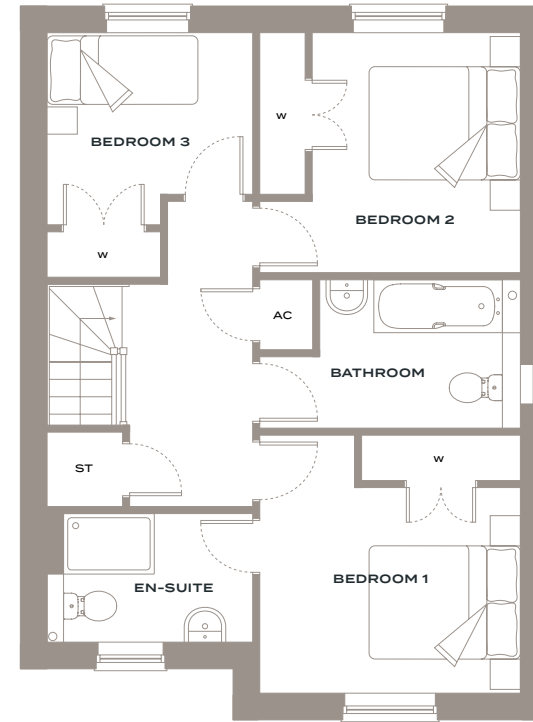
1,152 SQ FT

107 SQM



## GROUND FLOOR

LIVING ROOM	5.04M x 3.75M / 16FT 6" x 12FT 3"
KITCHEN/DINING	6.26M x 3.55M / 20FT 6" x 11FT 8"
CLOAKS	1.70M x 1.15M / 5FT 7" x 3FT x 9"



## FIRST FLOOR

BEDROOM 1	3.41M x 3.45M / 11FT 2" x 11FT 4"	BEDROOM 3	3.22M x 2.72M / 10FT 7" x 8FT 11"
EN-SUITE	2.50M x 1.69M / 8FT 2" x 5FT 7"	BATHROOM	3.21M x 1.96M / 10FT 6" x 6FT 5"
BEDROOM 2	3.45M x 3.17M / 11FT 4" x 10FT 5"		