

The Herrick

PLOT 4

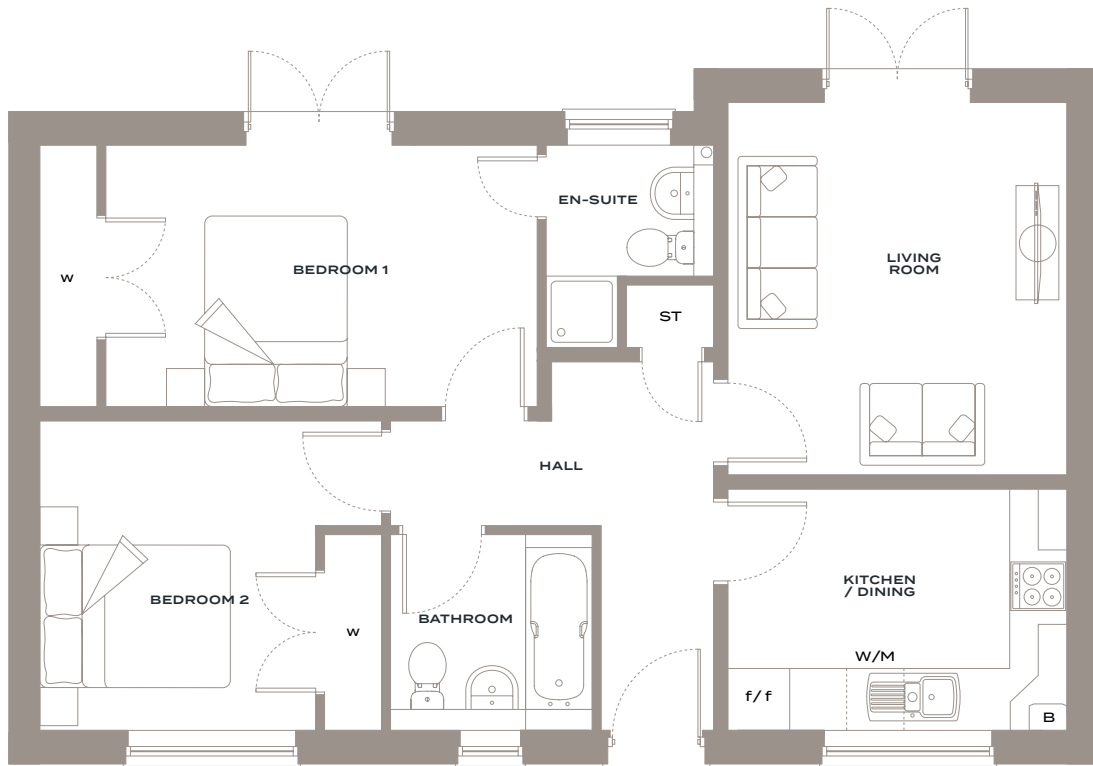
 2 BEDROOMS

 2 BATHROOMS

 2 PARKING SPACES

740 SQ FT

68.8 SQM



GROUND FLOOR

LIVING ROOM	3.91M x 3.56M	/	12FT 10" x 11FT 8"
KITCHEN	3.91M x 2.53M	/	12FT 10" x 8FT 4"
BEDROOM 1	5.23M x 2.75M	/	17FT 2" x 9FT 0"
EN-SUITE	2.13M x 1.55M	/	6FT 12" x 5FT 1"
BEDROOM 2	3.59M x 3.25M	/	11FT 9" x 10FT 8"
BATHROOM	2.12M x 1.84M	/	6FT 11" x 6FT 0"